

OPTION

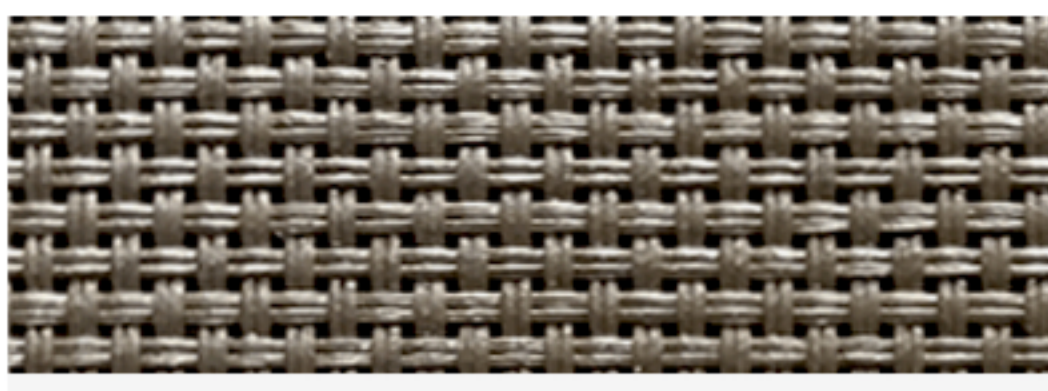
Available Fabrics

Our two most commonly used fabric options are 5 and 10 percent openness. They offer 95% and 90% protection based on openness. We use mainly darker colors to absorb the heat and absorb excess light passing through the fabric. More absorption equals more protection and a clearer view through with less glare. Mermet fabrics come in two styles: Natte and Satine. Natte offers the conventional 2x2 basketweave pattern, while the Satine offers a decorative twill weave pattern. Shop our available fabrics below.



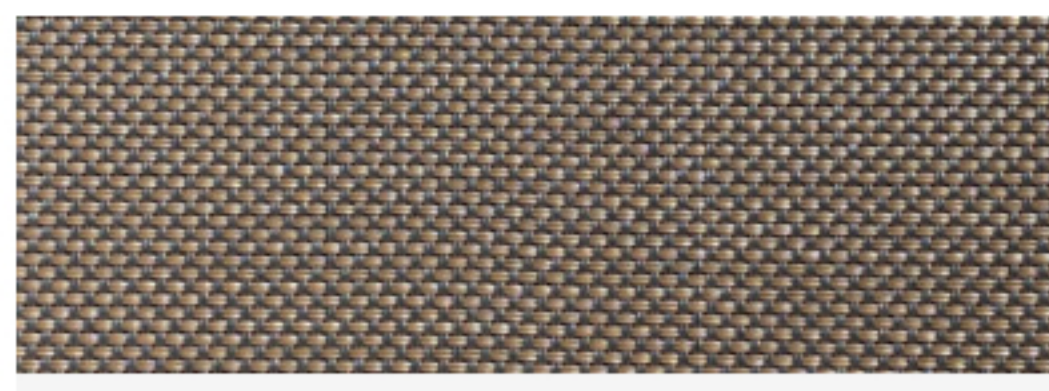
Natte 4500

- 10% openness factor
- 90% Heat and UV protection
- Best visibility and great protection
- 10-year limited warranty



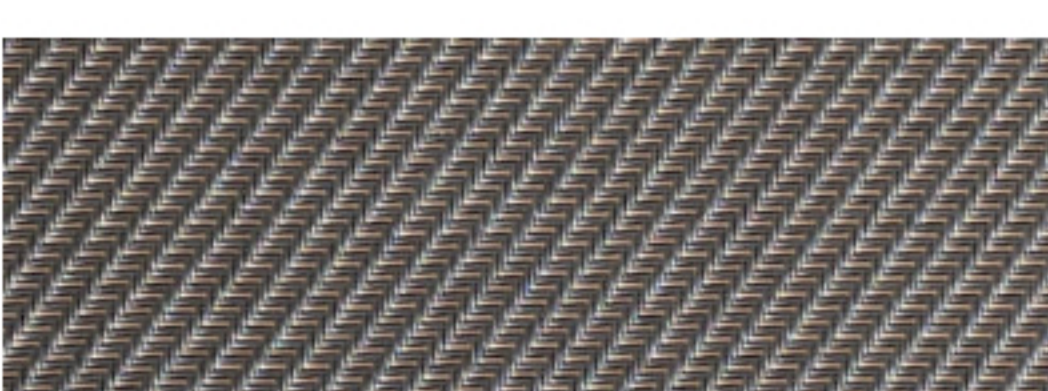
Natte 4505

- 5% openness factor
- 95% heat and UV protection
- Excellent visibility and protection
- 10-year limited warranty



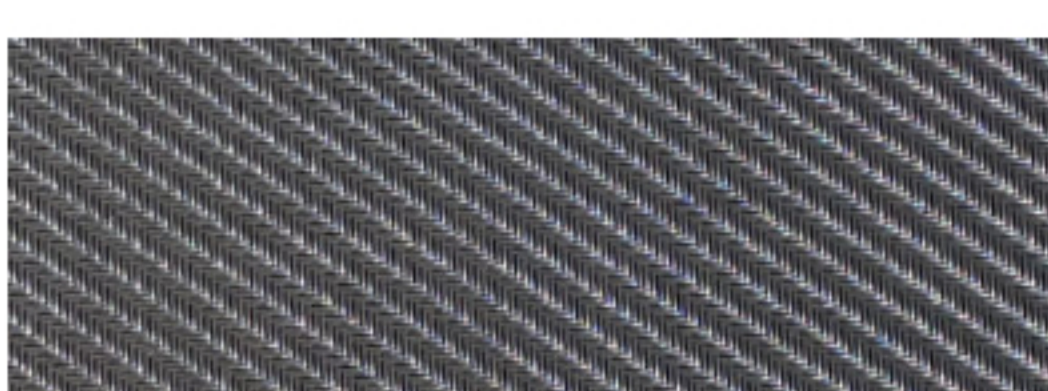
Natte 4503

- 3% openness factor
- 97% heat and UV protection
- Exceptional protection and privacy
- 10-year limited warranty



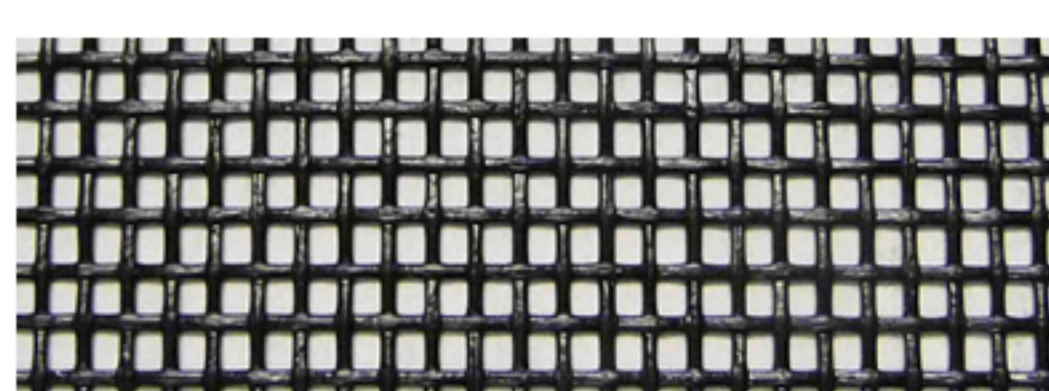
Satine 5705

- 5% openness factor
- 95% Heat and UV protection
- Excellent visibility and protection
- 10-year limited warranty



Satine 5701

- 1% openness factor
- 99% Heat and UV protection
- Most protection and exceptional privacy
- 10-year limited warranty

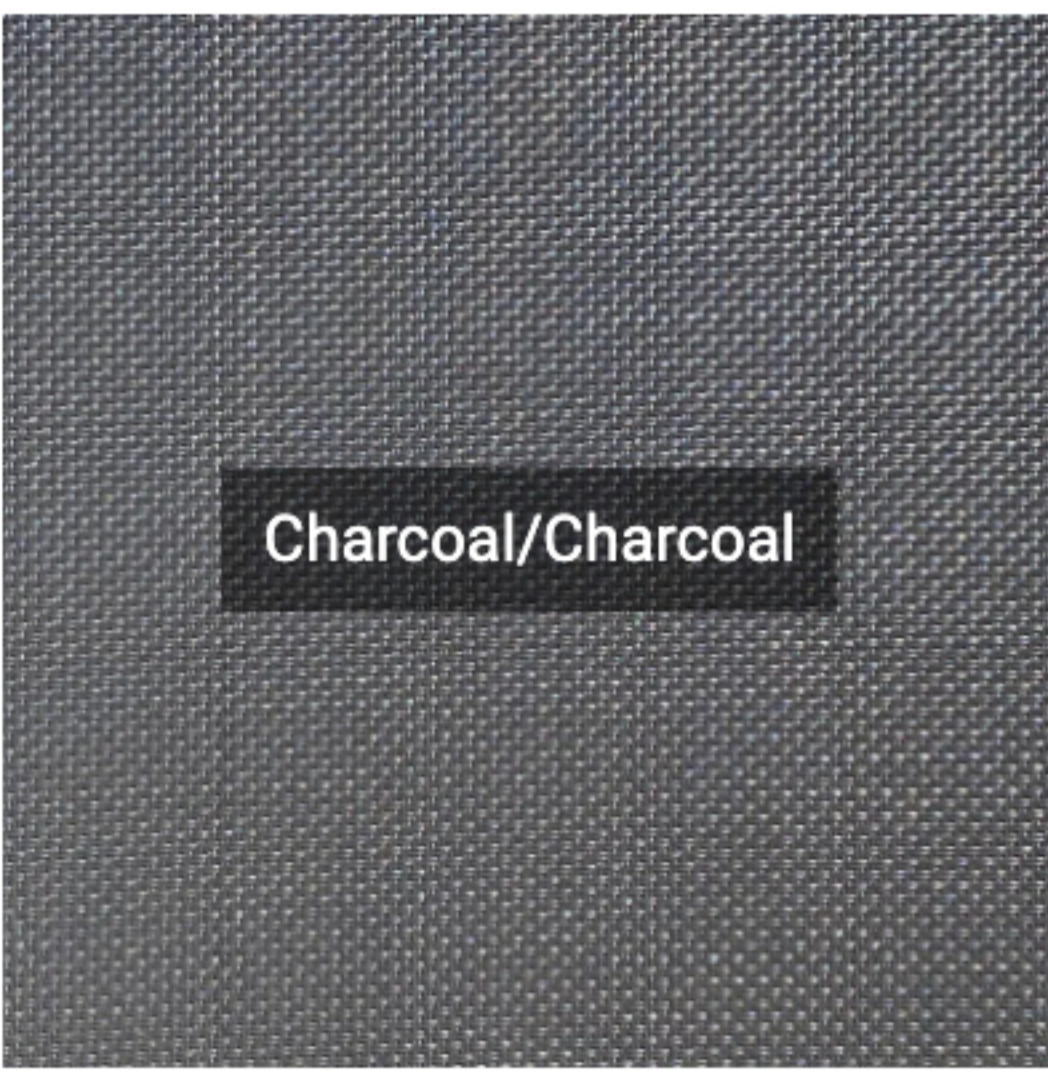


Tuff Insect Screen

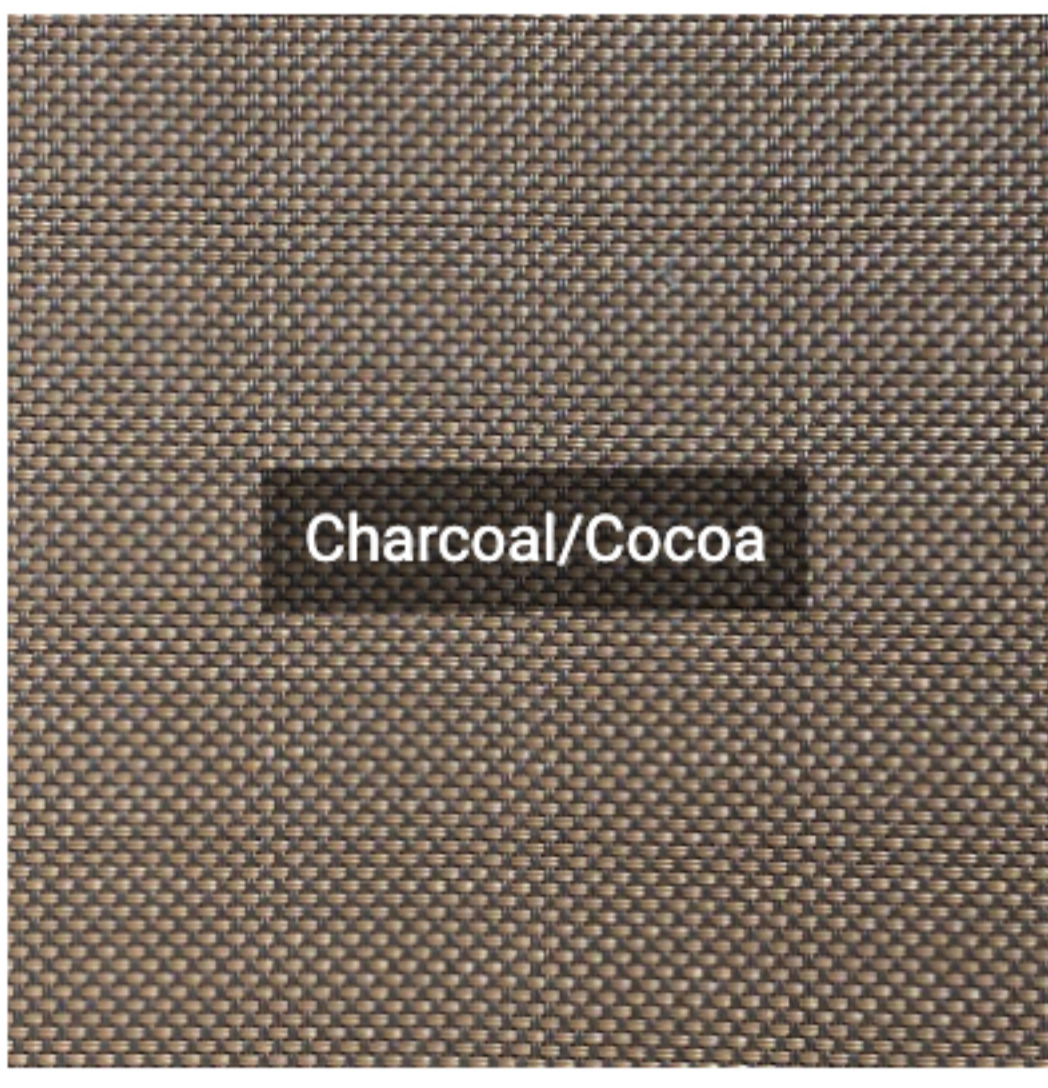
- 45% openness factor provides excellent visibility
- Protect yourself from pesky bugs
- Best Outward Visibility
- 10-year limited warranty

Natte Fabric Colors

We stock a variety of colors for Natte fabrics. See the choices below for readily available options.



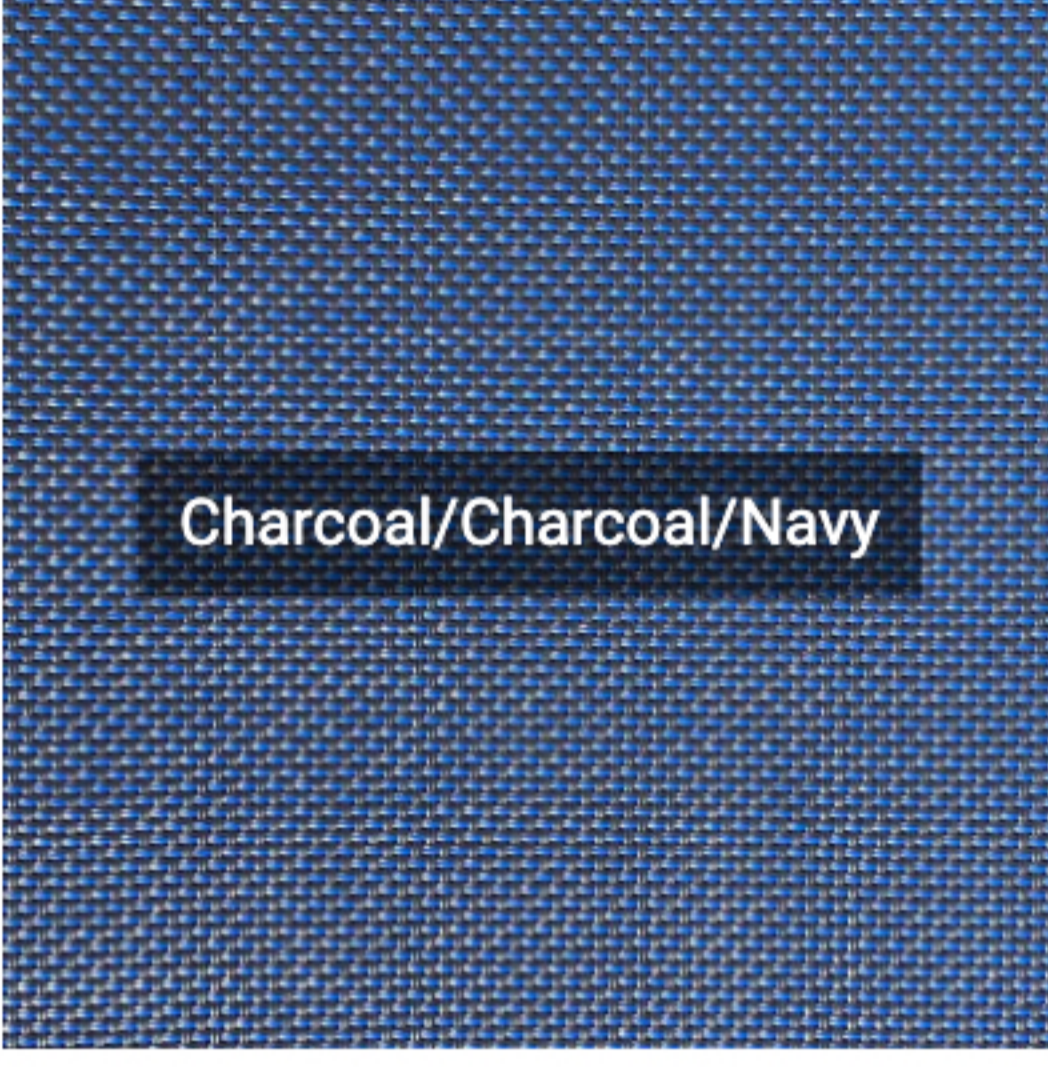
Charcoal/Charcoal



Charcoal/Cocoa



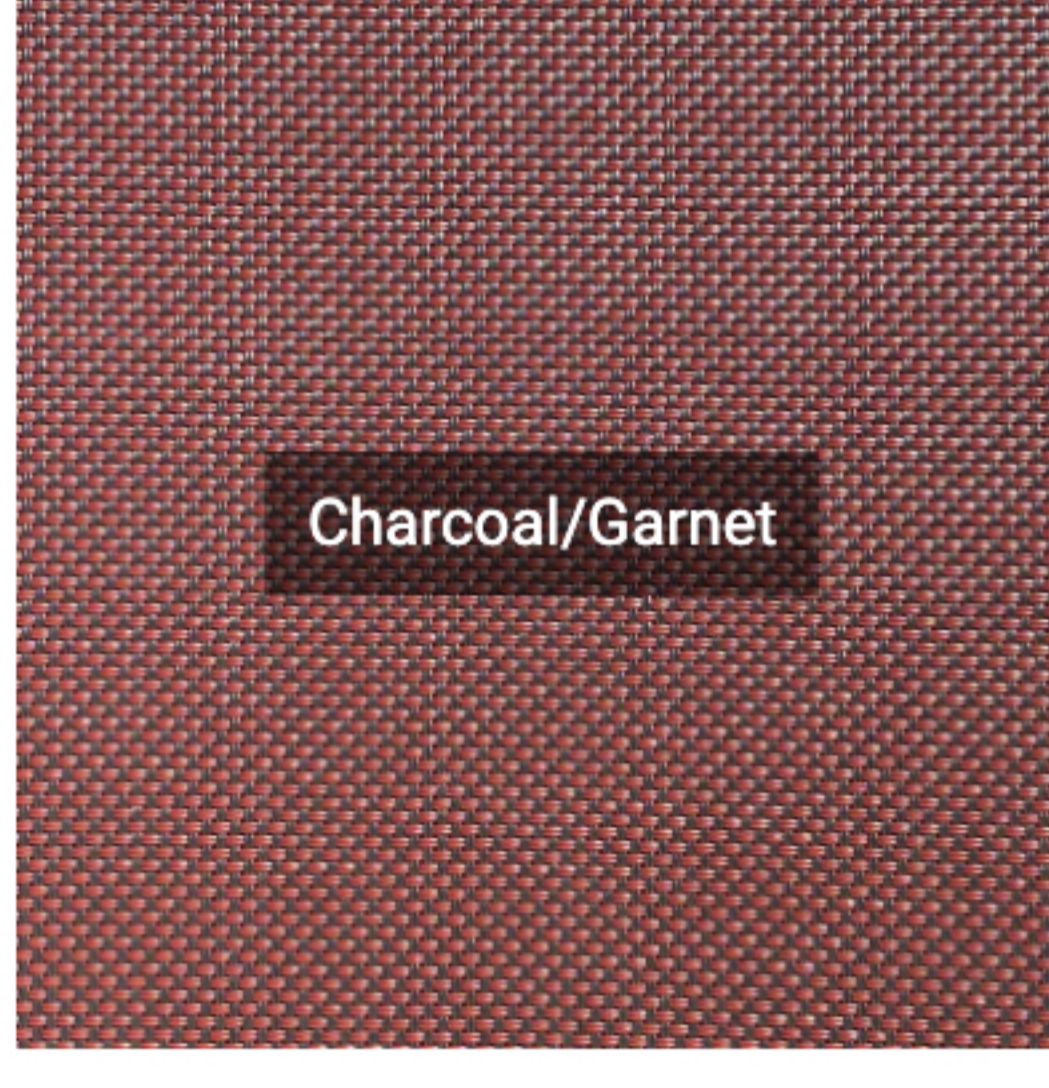
Charcoal/Cocoa/Fawn



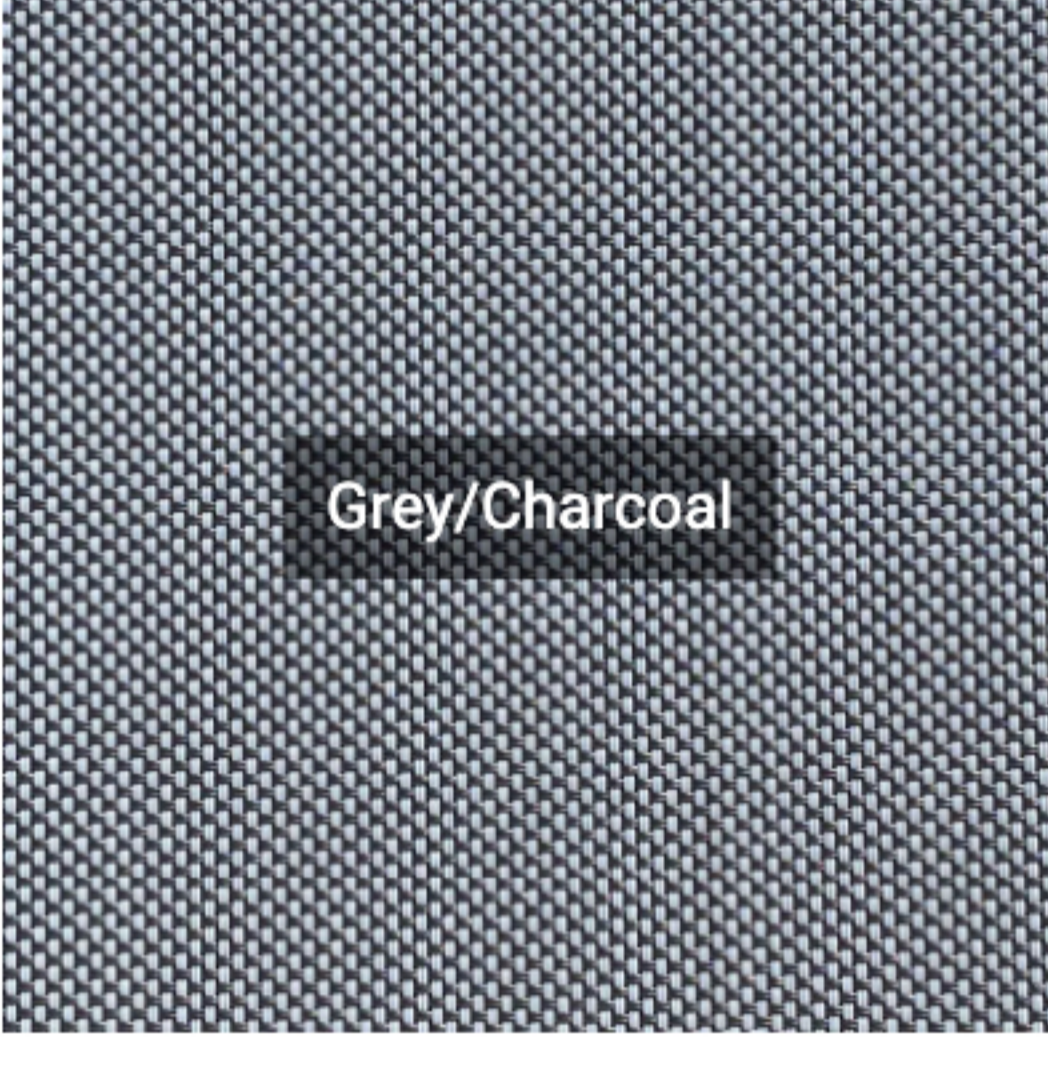
Charcoal/Charcoal/Navy



Charcoal/Forest



Charcoal/Garnet



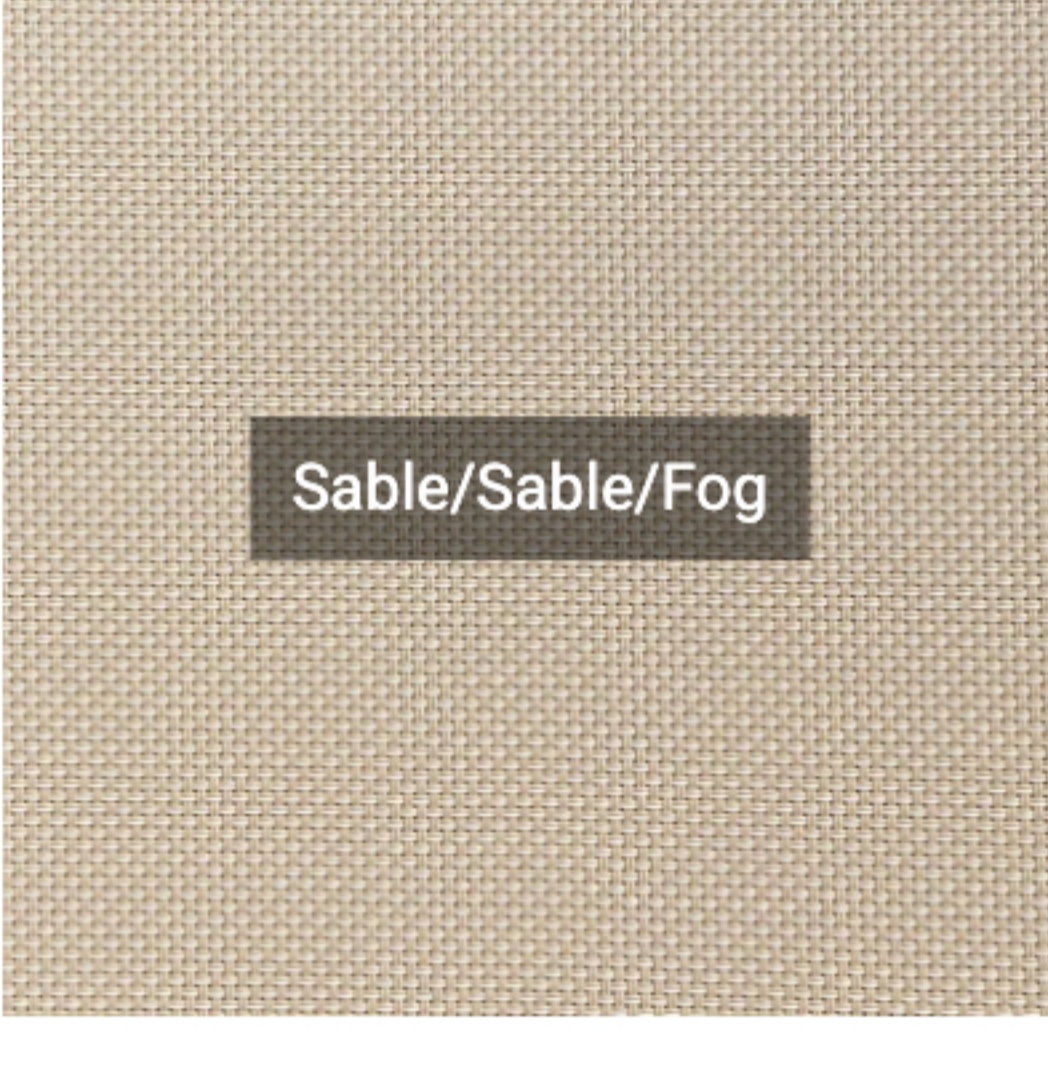
Grey/Charcoal



Grey/Grey



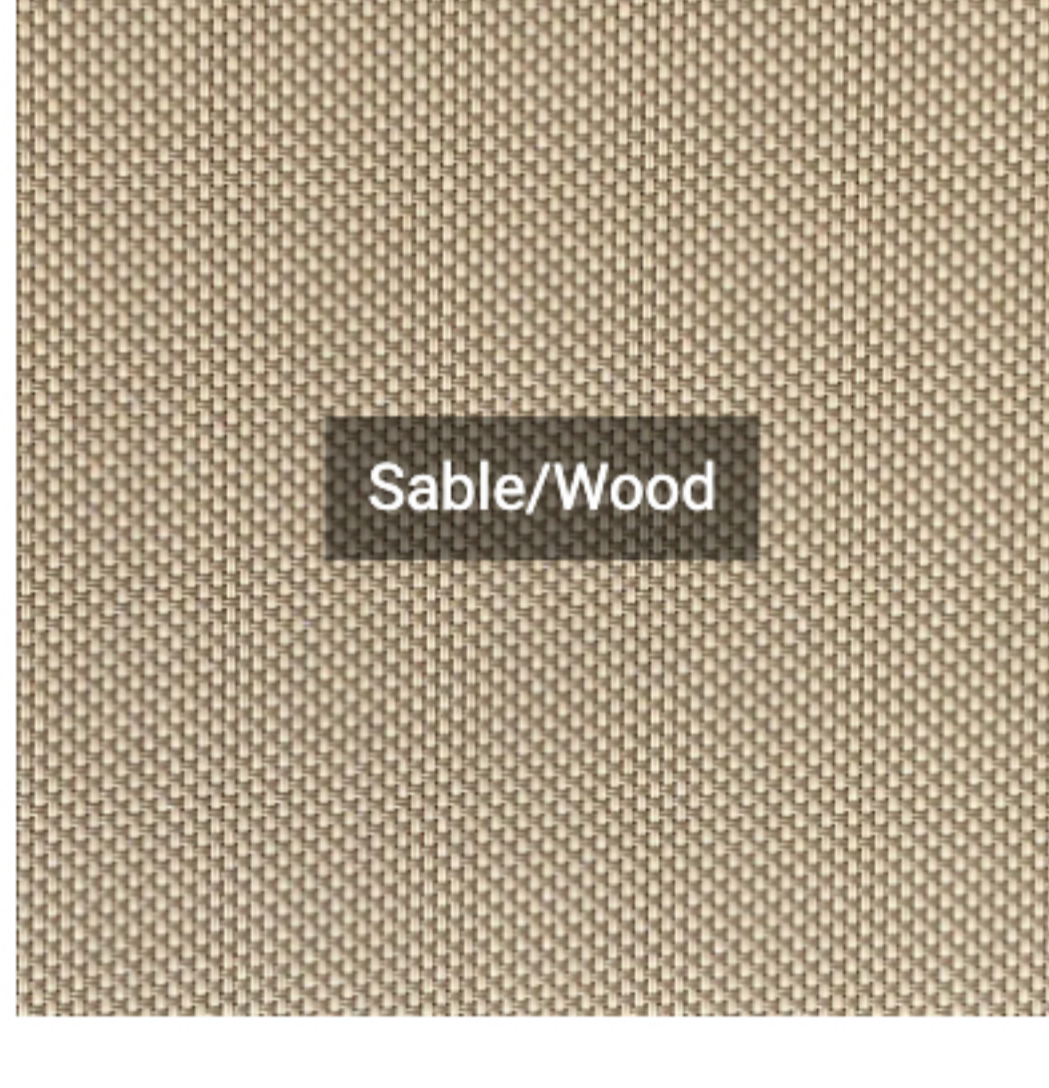
Grey/Sable



Sable/Sable/Fog



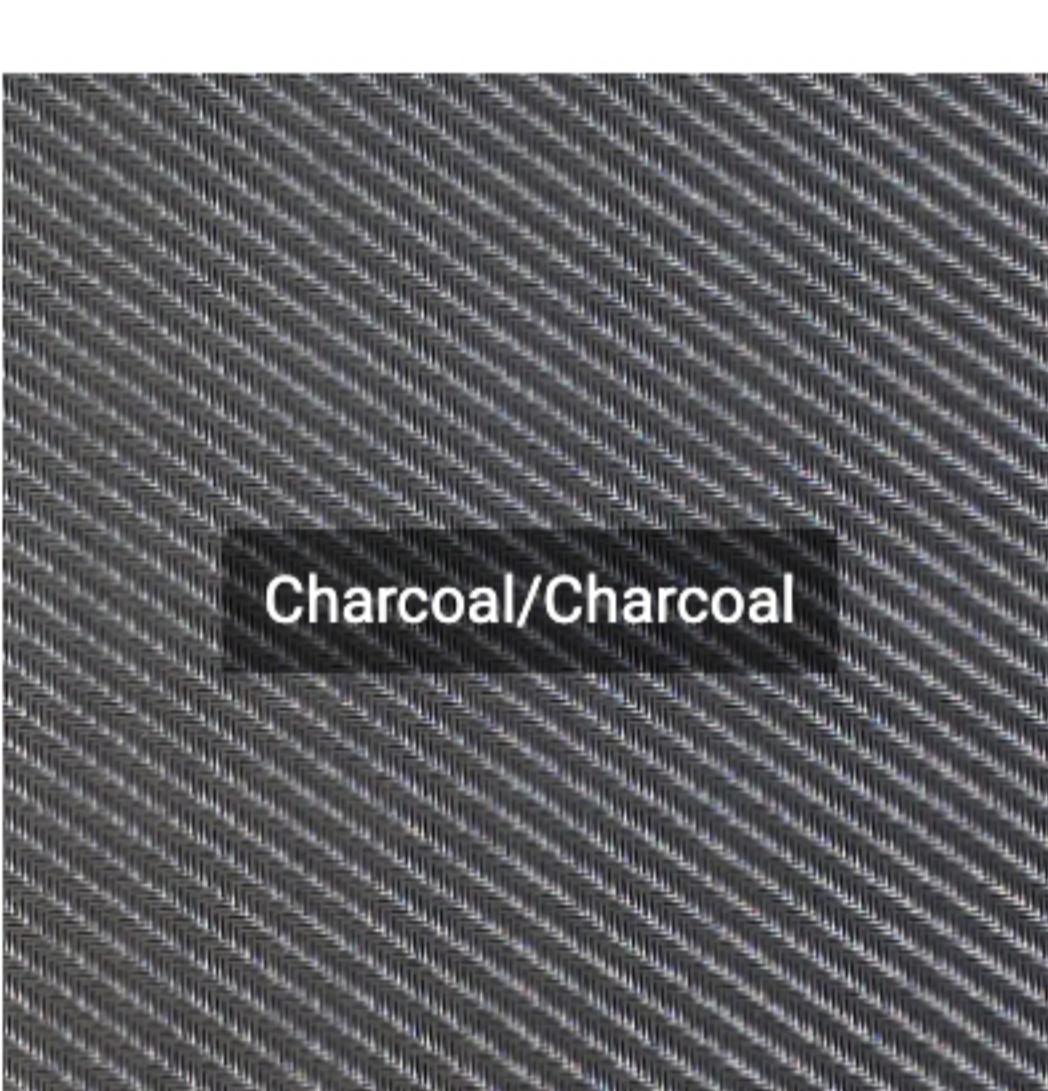
Sable/White



Sable/Wood

Satine Fabric Colors

We stock a variety of colors for Satine fabrics. See the choices below for readily available options.



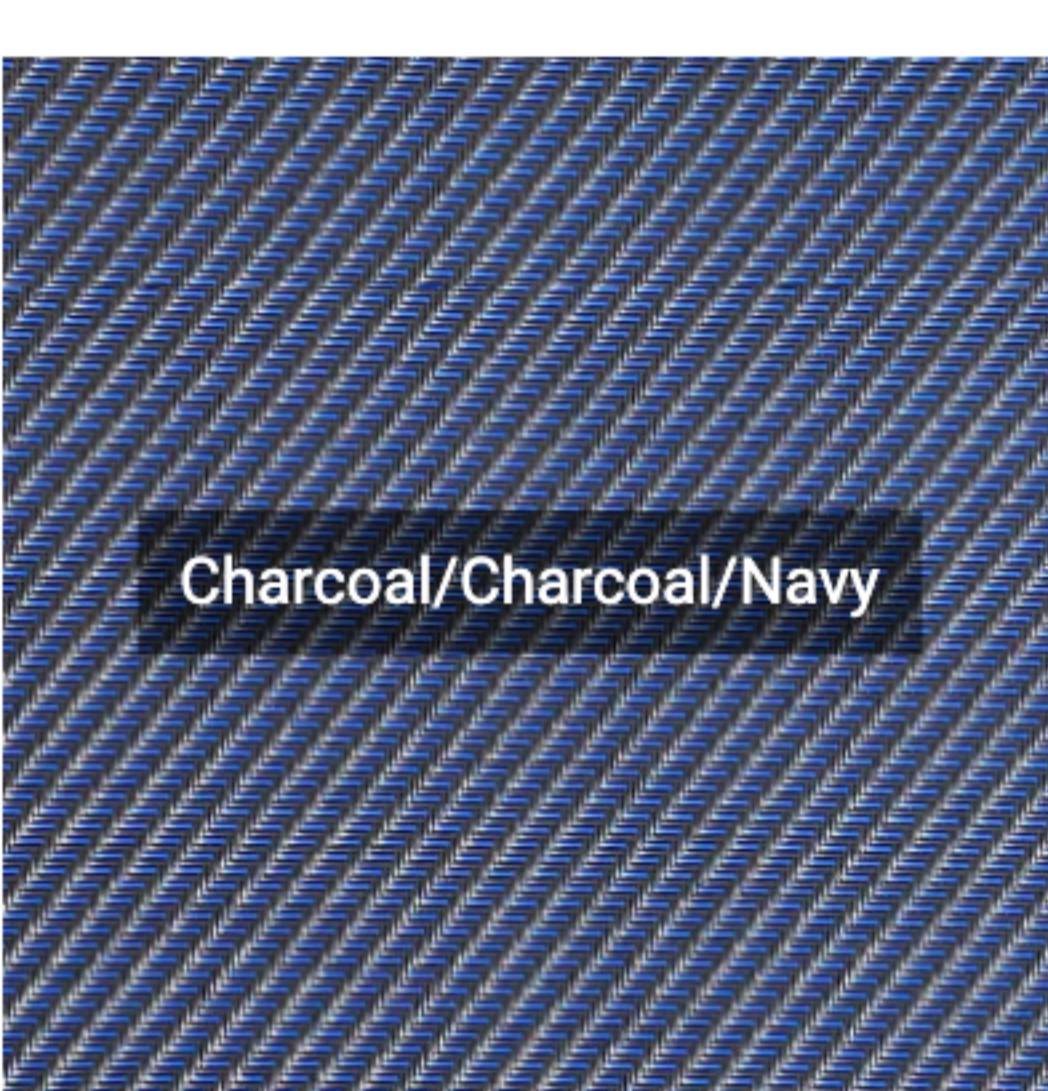
Charcoal/Charcoal



Charcoal/Cocoa



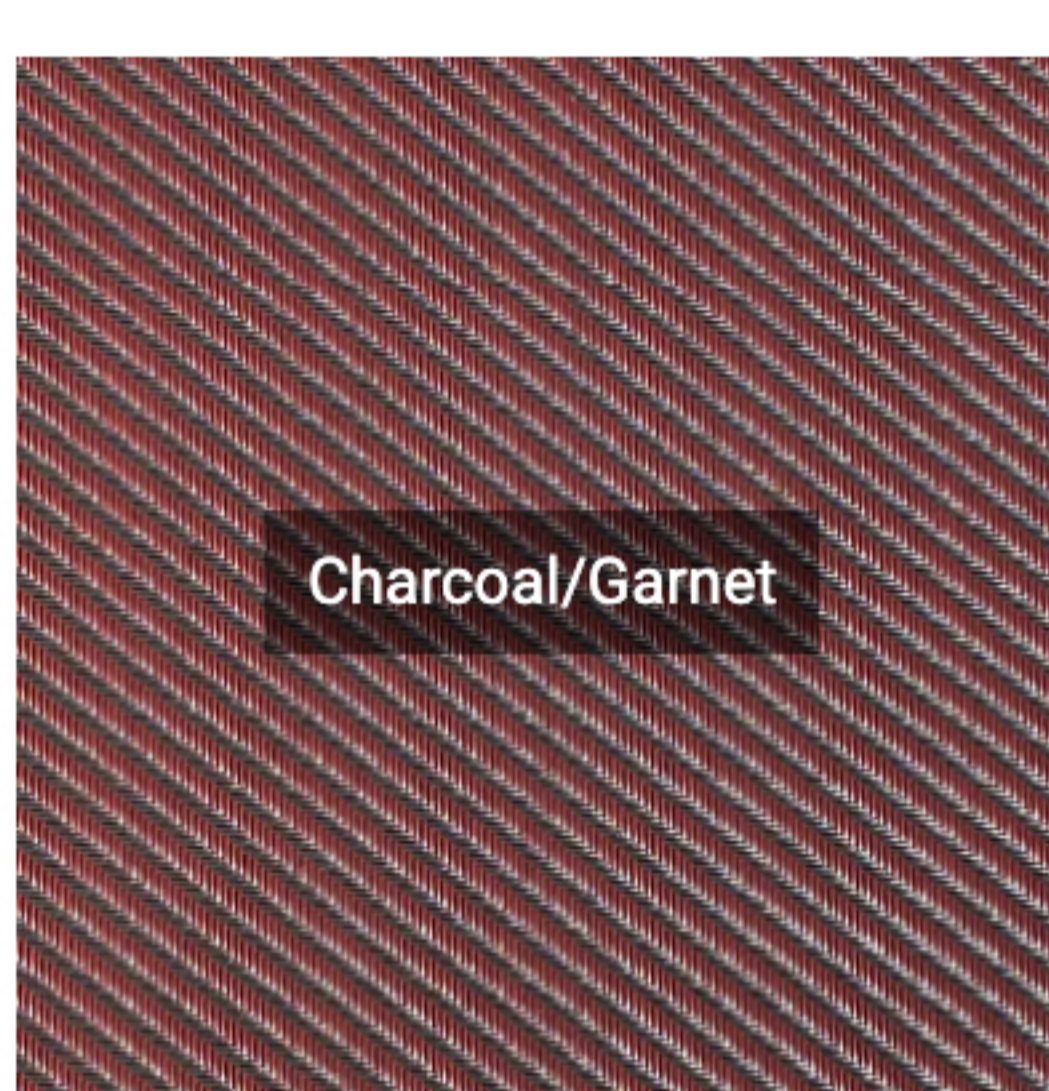
Charcoal/Cocoa/Fawn



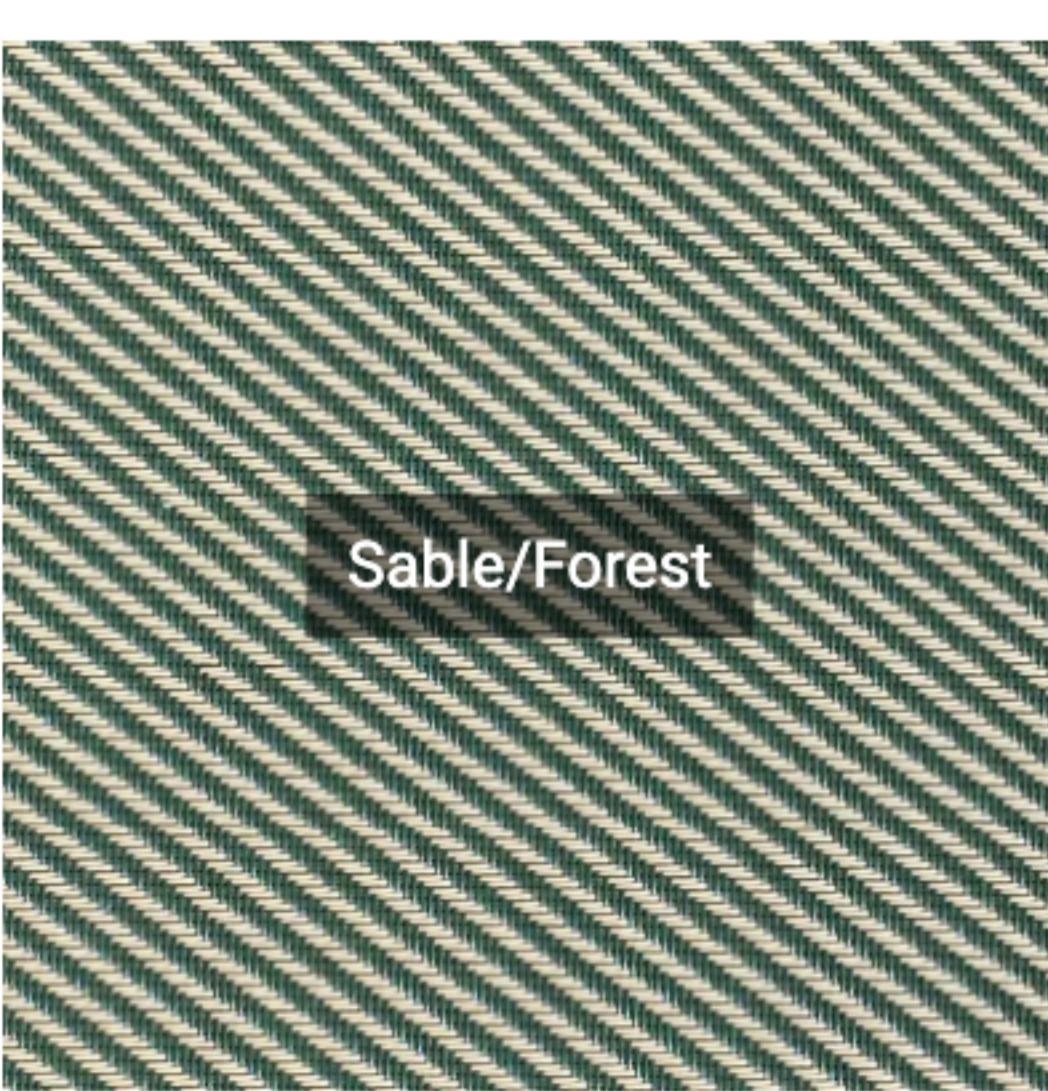
Charcoal/Charcoal/Navy



Grey/Fog/Charcoal



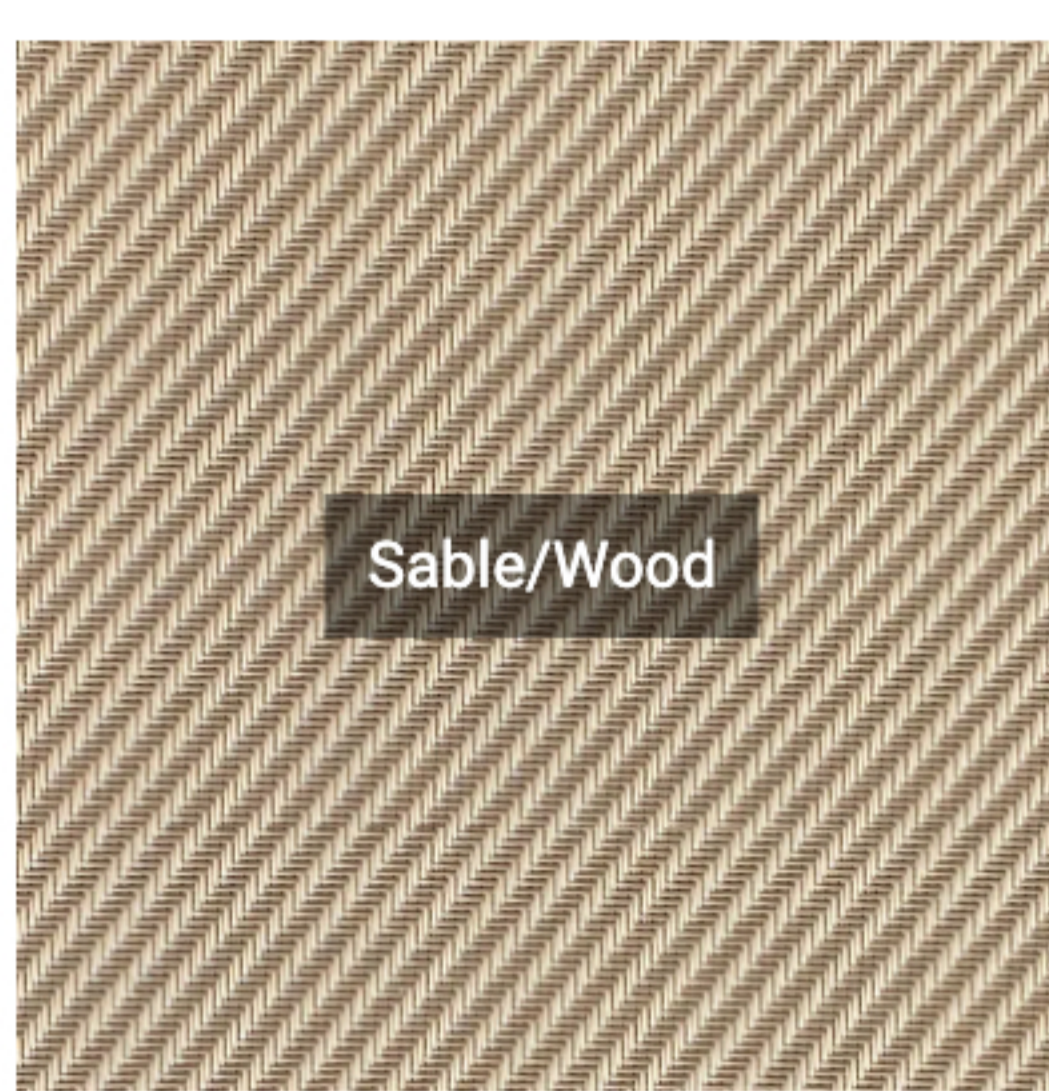
Charcoal/Garnet



Sable/Forest



Sable/Garnet/Auburn



Sable/Wood

OPTION

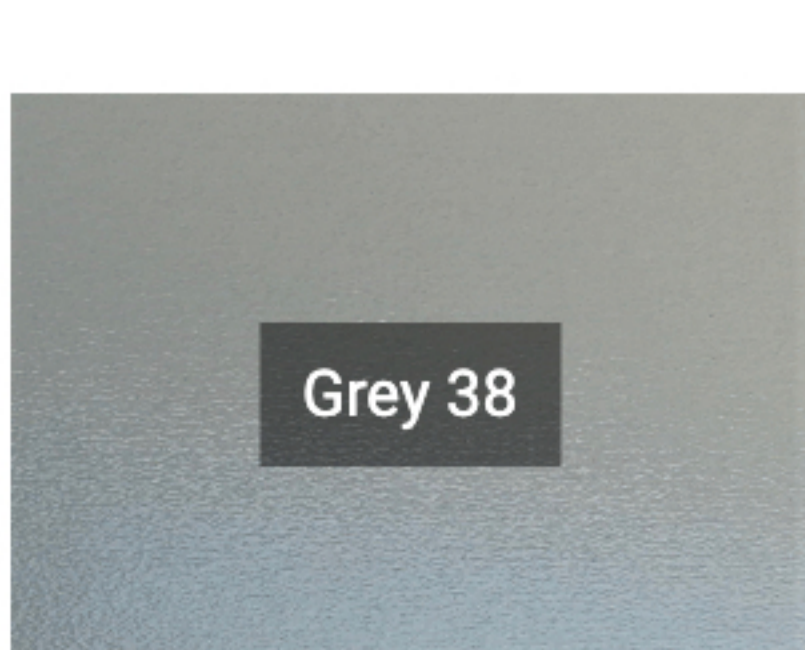
Screen Housing & Rails

Most of our screens are installed with an exterior powder-coated aluminum housing and rail system. We use extruded T6061 aluminum, made in America, that is powder coated at our facility in Tucson. We provide customers with 6 standard colors to choose from for their screen housing and rail system, but custom color powder coating is available to match any color, at an additional charge.

	Width	Height
5" extruded aluminum housing	Max 19ft.	Max 16ft.
6" extruded aluminum housing	Max 24ft.	Max 16ft.
7" extruded aluminum housing <i>Used for Solution Xtreme sizing</i>	Max 32ft.	Max 20ft.

OPTION

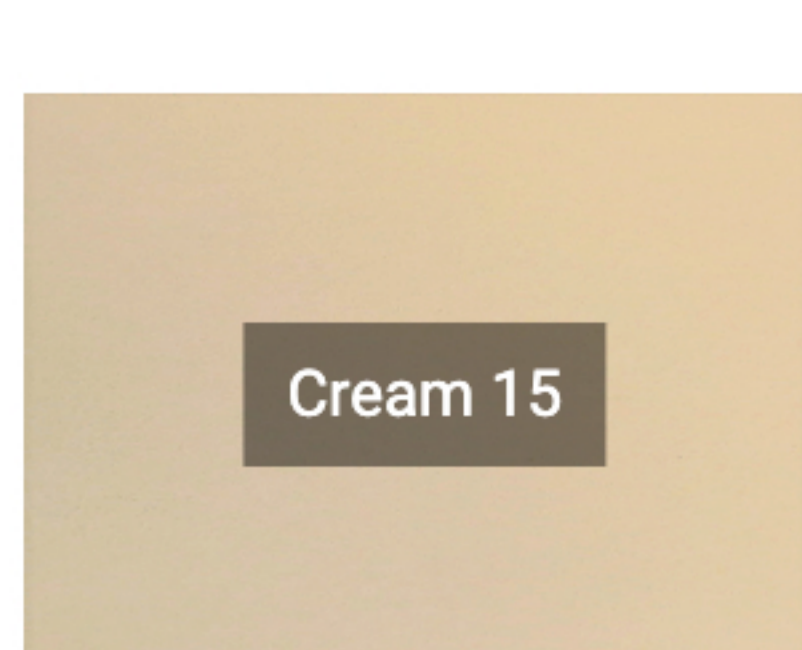
Housing & Rails Standard Colors



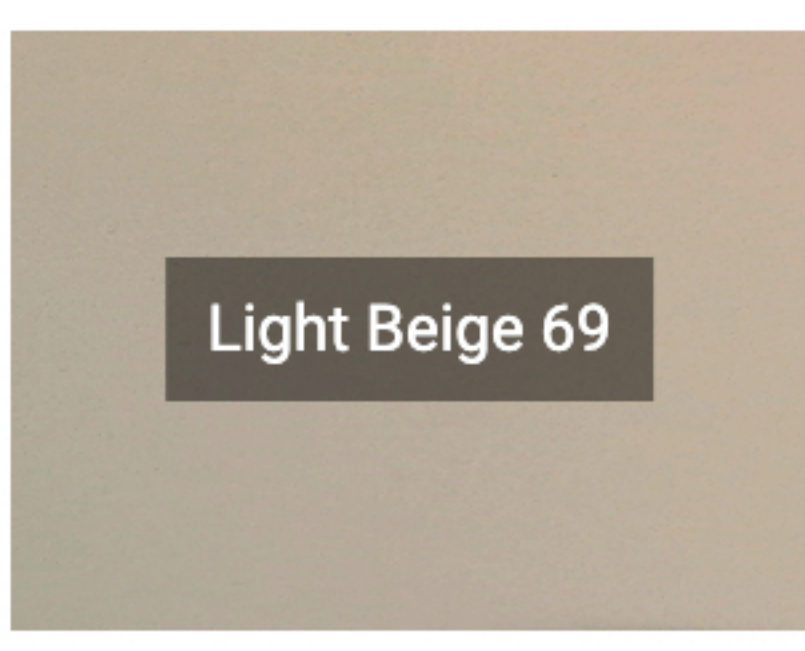
Grey 38



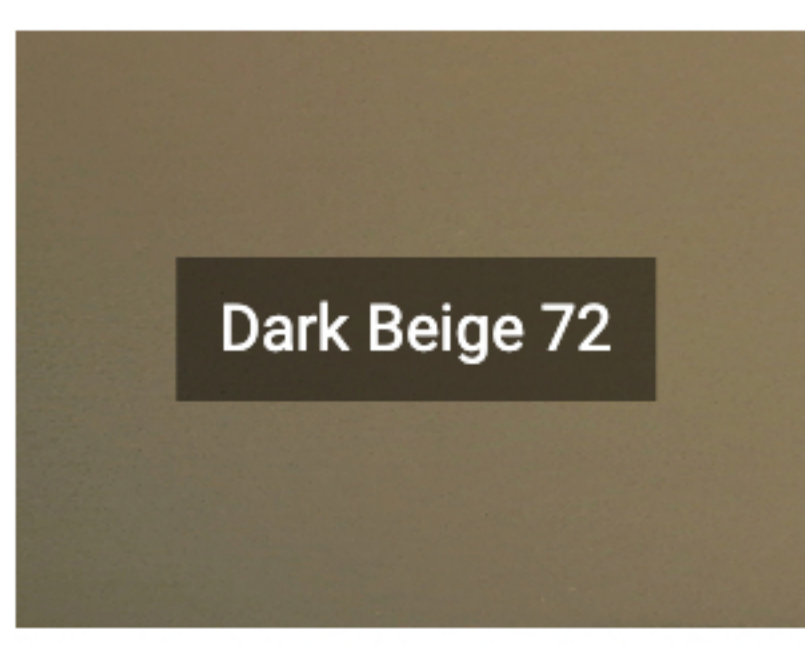
White 16



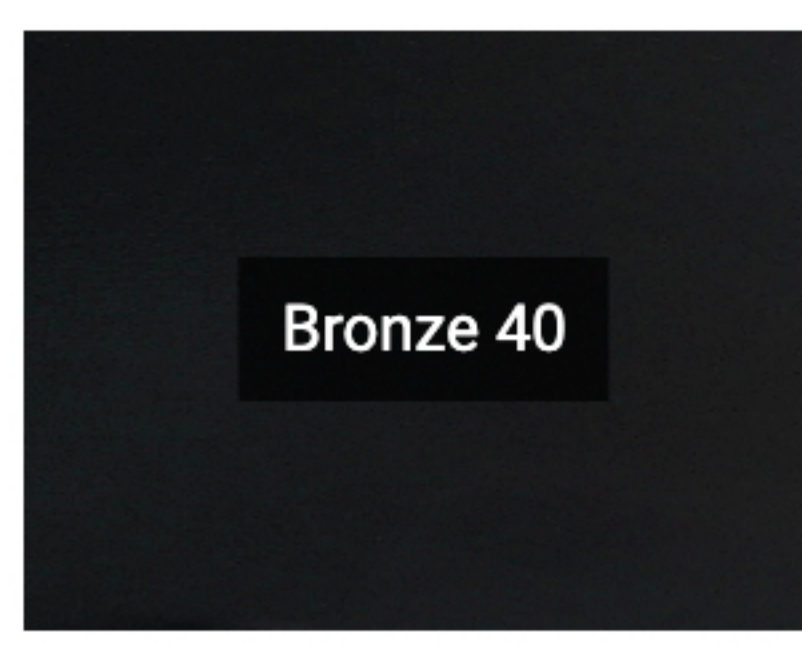
Cream 15



Light Beige 69



Dark Beige 72



Bronze 40